

## Hatch Dogs

### Flush Hatch Dog with Rectangular Flange

For Securely "Dogging" (Fastening) Deck Hatches

Material: Bronze with Stainless Steel Lock Nuts

Finish: Chrome Plated

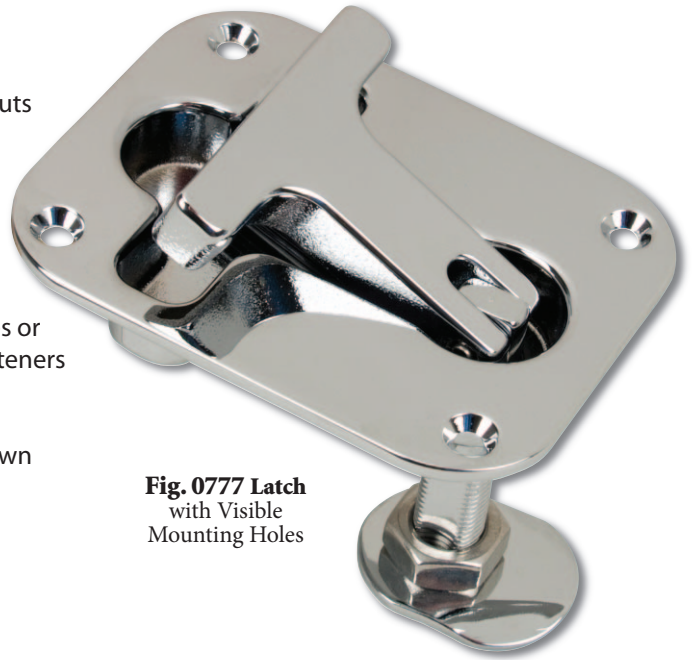
Dimensions: Face Plate: 3-13/16" x 3"

Max Hatch Thickness: Range: 2"

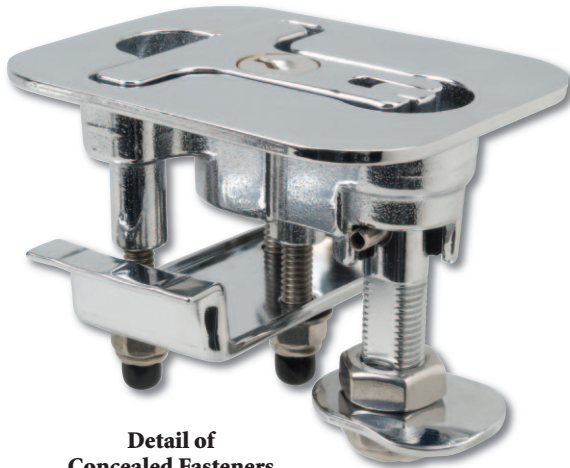
Cam Bar Adjustment: 1-1/4" to 2"

Screw Size: #8

- Features:
- Latch or Locking Versions
  - Flange with visible mounting holes or smooth flange with concealed fasteners
  - Flush strike
  - O-Ring seals for water resistance
  - Does not rattle when "dogged" down



**Fig. 0777 Latch**  
with Visible  
Mounting Holes



**Detail of  
Concealed Fasteners  
Bottom Plate**



**Fig. 0777FL Lock**  
with Concealed  
Fasteners

**Fig. 0777F Latch**  
with Concealed  
Fasteners

**Fig. 0777L  
Lock with Visible  
Mounting Holes**

Type	Cam Bar Length	Standard. Pkg.* OEM Bulk Pkg. Visible Mount Holes	Standard. Pkg.* OEM Bulk Pkg. Concealed Fasteners
Latch	15/16"	0777000CHR	0777F00CHR
Latch	1-1/2"	0777001CHR	0777F01CHR
Latch	3"	0777002CHR	0777F02CHR
Lock	15/16"	0777L00CHR	0777FL0CHR
Lock	1-1/2"	0777L01CHR	0777FL1CHR
Lock	3"	0777L02CHR	0777FL2CHR

\* Std. Pkg. 1 Pc.



#### Spare Parts Ordering Information

Cam Bar for Size #0: 077700099A  
Cam Bar for Size #1: 077700199A  
Cam Bar for Size #2: 077700299A

### Strike and Cam Bar Options

